

LEADERS IN SHOTCRETE

WHAT WE DO...

Structural Shotcrete Walls



Shotcrete walls of any wall thickness and any concrete finish. Typical applications include below-grade basement and parking garage walls.

Culvert & Tunnel Shotcrete Linings



Add decades of life with shotcrete linings. Rehabilitation of culverts. Reinforced tunnel linings.

Shotcrete Shoring



Effectively and efficiently stabilize potentially hazardous road and highway excavations for either temporary or permanent solutions.

Architectural Shotcrete



Shotcrete knows no bounds. Design your custom creation free of the constructability limitations and costliness of cast in place concrete.

Skateparks



Public or private shotcrete placement subcontractor for the construction of skateboard parks, bike parks and pump tracks.

CCP Shotcrete + Pumping



PUMP . PLACE . FINISH . CURE . EVERY DAY

This is CCP

Curtis Concrete Pumping (CCP) is a Texas-based shotcrete contractor that specializes in high production, time sensitive, and technical shotcrete projects for the civil, heavy commercial, recreational and architectural markets in Texas and surrounding states.

Our turnkey shotcrete construction services begin at any stage. We assist engineers who aren't familiar with specifying shotcrete. We provide pricing during the bidding phase. We mobilize quickly to continuously and diligently complete the work as originally specified OR as a time saving change order.

Rely on CCP for qualified equipment, certified shotcrete craftsmen and supporting ground resources to construct your project.

TESTIMONIALS

“ I would like to thank CCP for performing your scope of work safely, efficiently, with quality as priority. Your entire crew is to be commended for the work that they performed. I hope for your continued success and look forward to working on another project with you. ”

— SUNDT —



STRUCTURAL SHOTCRETE WALLS

Advantages of the Shotcrete Placement Method



SAVE TIME

Shotcrete provides contractors and owners the advantage of accelerating a project's schedule. For most applications more wall can be placed with shotcrete than form-and-pour.



EQUAL ALTERNATE

Shotcrete is an industry accepted equal alternate to the traditional cast in place concrete placement method.



QUALIFIED

CCP is Texas' most experienced structural shotcrete wall contractor. Certified personnel with the highest customer service.



FINISH

CCP provides shotcrete services with any concrete finish. Nozzle, broom, sponge, Class A steel trowel shotcrete.



NO CRANE

Get your crane back and increase your productivity. Shotcrete requires little to no crane time during the course of work.



REDUCE FORMS

Save 50% - 100% in time and material costs associated with one-sided or no-sided shotcrete form work.

Shotcrete Wall Placement

Accelerate your construction schedule by implementing the shotcrete process. In one day CCP will:

- 1 Set concrete wall thickness and vertical alignment.
- 2 Shotcrete wall at a much faster rate than form-and-pour.
- 3 Finish concrete to any specification.
- 4 Tool in expansion and construction joints.
- 5 Implement curing method.

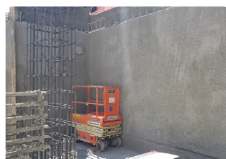
Prep your deck the following day!

Typical shotcrete wall applications include basement walls, perimeter and interior walls, below grade parking garage structures, shear walls.



Shotcrete Wall Benefits

- 1 Ability to place walls top-down, bottom-up or at full excavation.
- 2 Substantially increase production compared to cast in place concrete walls.
- 3 ACI shotcrete specifications are readily available.
- 4 Easily incorporate shotcrete as a change order during construction.
- 5 High strength, low permeability and high durability.
- 6 Faster concrete set-up reduces labor costs.
- 7 Better bonding to the receiving surface.
- 8 Reduction of forming materials by up to 100%.
- 9 No extra concrete footings required for wall supports.
- 10 Reduced crane time for form setting and concrete pouring.



STRUCTURAL SHOTCRETE WALLS

Shotcrete Linings for Culverts & Tunnels



CULVERT LINING

Shotcrete is an incredibly efficient and permanent method for rehabilitating deteriorating culverts.



TUNNEL LINING

Vertical and overhead shotcrete placement for primary and final linings.



DAMS & SPILLWAYS

Rehabilitation and new construction with shotcrete means reduced labor and materials costs.

Shotcrete Wall Placement

CCP is your placement contractor for shotcrete tunnel linings. Our scope of work includes the providing of all shotcrete equipment, a skilled shotcrete crew and/or concrete ready mix material. We are experienced in placing shotcrete to a prepared surface of anchor bolts and mesh reinforcement, or with the utilization of fiber reinforced shotcrete (FRS). We understand tunnel projects often require the deployment of shotcrete services sporadically throughout the project duration. Initial shotcrete liners shore new sections of an excavated tunnel, and final shotcrete liners can either be covered with a secondary coating or may be finished as a final, structural product.



Shotcrete Culvert Linings

Shotcrete is an extremely efficient and cost effective solution for the repair of failing culverts. After engineered design and site preparation, CCP shotcrete teams place the shotcrete liner and initiate the concrete curing process on a daily basis. Shotcrete is oftentimes less intrusive to construction site when compared to the use of slip forms and proprietary liners. Unlike these systems, shotcrete requires no crane time, additional excavation work and little to no forming. Rusted corrugated metal pipe (CMP) culverts are common infrastructure rehabilitation projects. CCP stands by to line culverts completely in 360 degrees by placing shotcrete in the vertical and overhead positions, or limited placement to the invert level only. Other related applications include drain swales in areas that aren't conducive to underground drainage systems.

For the culvert and drainage repair market our clients typically include utility contractors, road and highway contractors, and State departments of transportation.



STRUCTURAL SHOTCRETE WALLS

The Terraces at Douglas Center

SERVICE TYPE: STRUCTURAL SHOTCRETE BELOW GRADE WALLS

LOCATION: DALLAS, TEXAS

PROJECT DESCRIPTION: CCP was selected by Austin Commercial LP to place, finish and cure all below-grade shotcrete basement walls. The project consists of a 4 level, below grade parking structure on a 4.35 acre, zero lot line site. Wet mix shotcrete for the perimeter walls was determined as the preferred construction method. Less crane time, no concrete forming and increased wall production when compared to form-and-pour resulted in both cost savings and an accelerated project schedule. The forming contractor was able to prepare the post tensioned concrete floors immediately after wall placement. The 12 inch, heavily reinforced walls were finished with an engineer specified sponge float concrete finish during preconstruction shotcrete testing.



Kinder Exhibit Hall At Houston Museum Of Fine Arts

SERVICE TYPE: TUNNEL SHOTCRETE LINING

LOCATION: HOUSTON, TEXAS

PROJECT DESCRIPTION: CCP was selected to perform turn-key shotcrete of a 150 foot long tunnel connecting the existing Caroline Wiess Law Building and the Kinder Building beneath Bissonet St. in Houston's Museum District. The scope of work consists of a primary and secondary shotcrete liner. First, shotcrete between structural steel ribs after excavation brought the tunnel to a consistent radius. A waterproofing membrane, anchors and reinforcement were installed prior to a secondary shotcrete liner. Shotcrete operations required the introduction of an accelerating concrete admixture at the nozzle. American Concrete Institute (ACI) certified Shotcrete Nozzlemen led all shotcrete placement for the project.

The Emigrant Inn

SERVICE TYPE: TEMPORARY SHOTCRETE RETENTION

LOCATION: FREDERICKSBURG, TEXAS

PROJECT DESCRIPTION: CCP was selected for the temporary shotcrete shoring of one wall within an excavated, zero lot line construction site. Scope included all materials, equipment and specialty labor to install welded wire mesh, associated anchors and perform shotcrete placement. The utilization of shotcrete for the project served two purposes. It temporarily stabilized the excavated wall from erosion and adverse weather during the course of construction. Shotcrete also provided a uniform, vertical concrete surface to allow for suitable waterproof membrane installation. Shotcrete proved advantageous for its versatility and flexibility. CCP was able to mobilize quickly and perform all preparations and shotcrete operations within two working days.







